

CAD INTERNATIONAL

TEN MUSEUM PARK
1040 BISCAYNE BLVD, SUITE 200
MIAMI, FL 33132 USA
T 305.438.9757 - F 305.438.9758
E INFO@CADINTL.COM - WWW.CADINTL.COM

COPYRIGHT © 2013 CAD INTERNATIONAL

PROJECT:
INTERIOR RENOVATIONS FOR:

REGALIA
UPPER PENTHOUSE
19575 Collins Avenue
Sunny Isles Beach, FL 33160

CLIENT:

REV. NO. BRIEF DESCRIPTION CONTENT

CONTENT:

43 - FLOOR PLAN

SCALE: DRAWN BY:
3/16"=1'-0"

DESIGNED BY:
CHARLES ALLEM

SUPERVISING ID. MICHAEL W. HANLON
FL REGISTERED ARCHITECT
REGISTRATION NO. AR047270
FIRM ARCHITECTURE, LLC
AA20000726

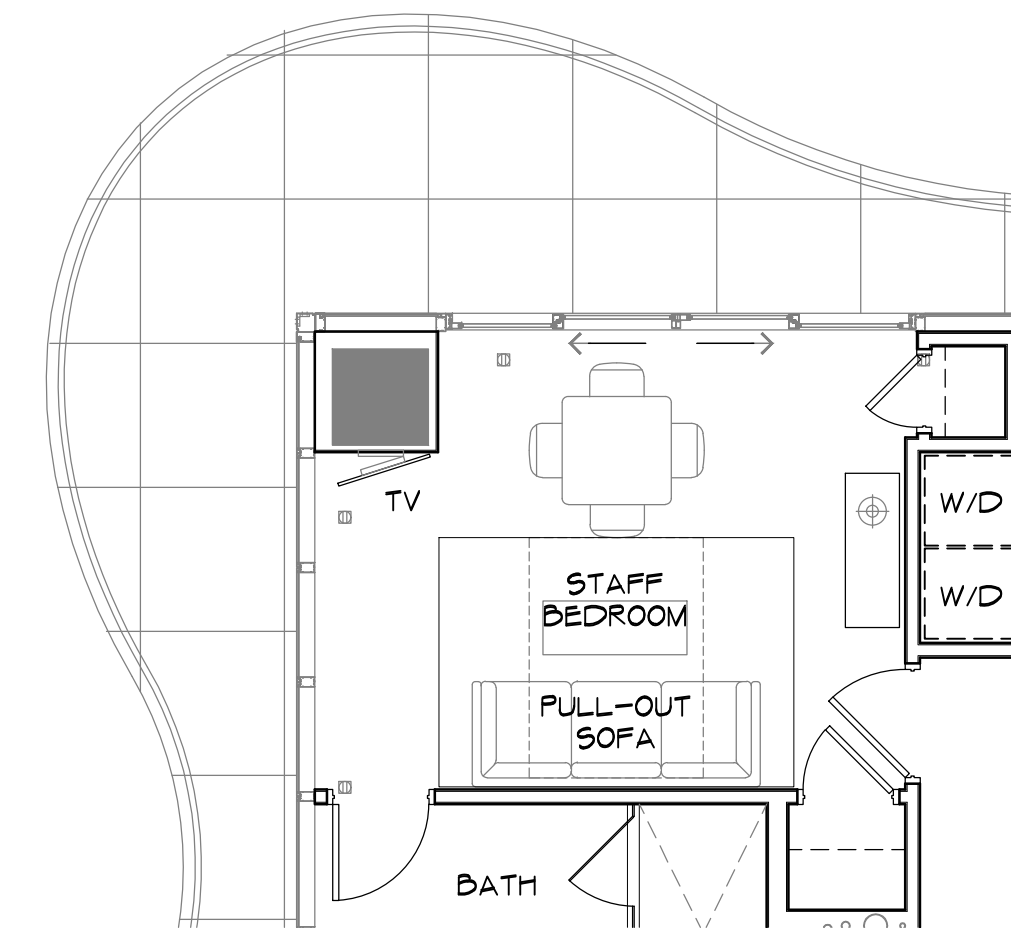
ISSUED FOR:

PROJECT NO. DRAWING NO.

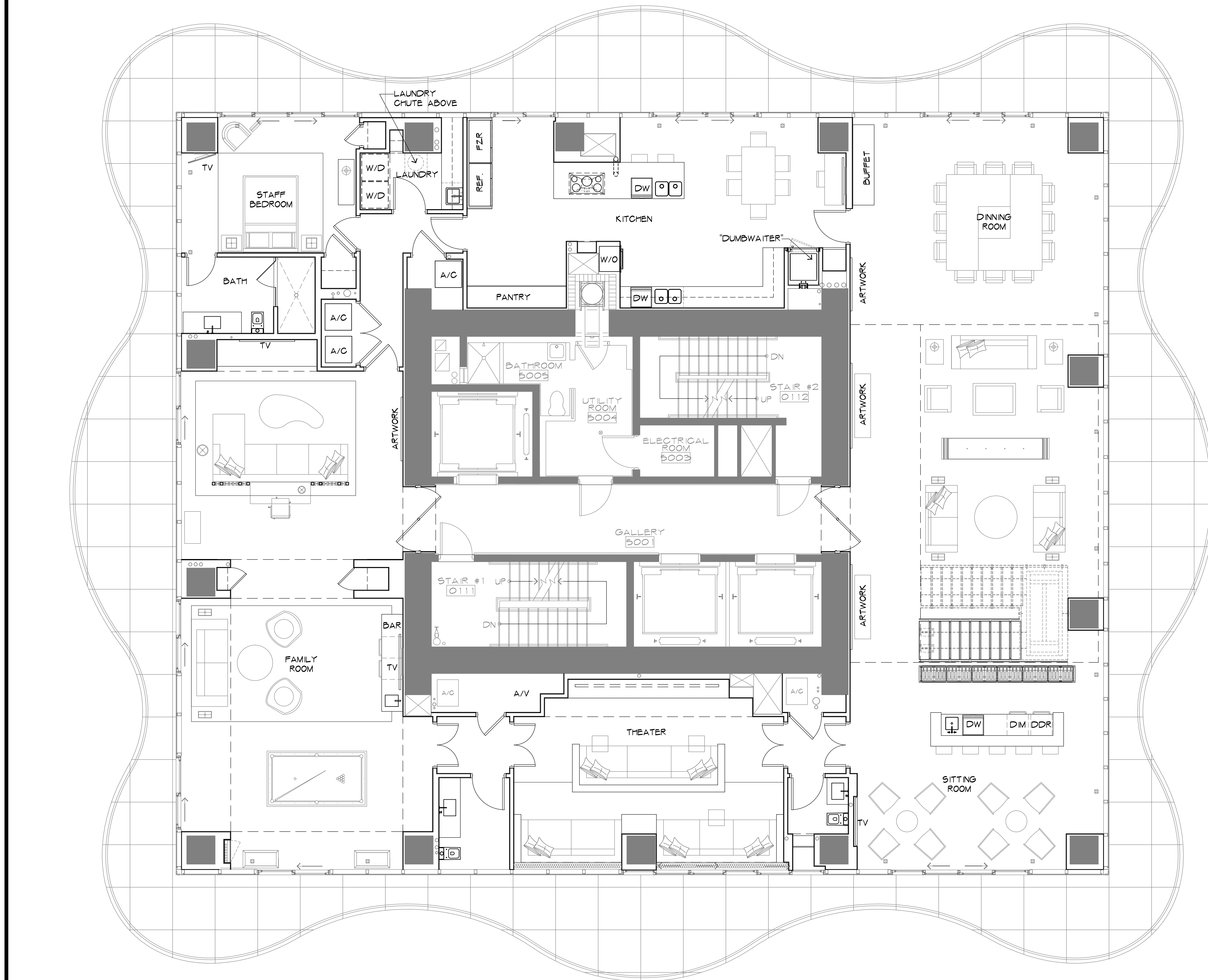
14-015

A-1.0

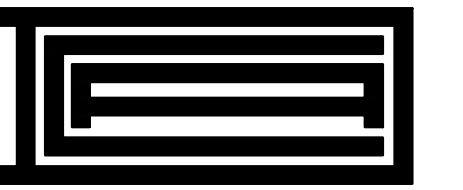
DATE PRINTED:
2014-05-22



2
3/16"=1'-0" **43 - STAFF BDRM OPTION**



1
3/16"=1'-0" **43 - FLOOR PLAN**



CAD INTERNATIONAL

TEN MUSEUM PARK
1040 BISCAYNE BLVD, SUITE 200
MIAMI, FL 33132 USA
T 305.438.9757 - F 305.438.9758
E INFO@CADINTL.COM - WWW.CADINTL.COM

COPYRIGHT © 2013 CAD INTERNATIONAL

PROJECT:
INTERIOR RENOVATIONS FOR:

REGALIA
UPPER PENTHOUSE
19575 Collins Avenue
Sunny Isles Beach, FL 33160

CLIENT:

REV. NO. BRIEF DESCRIPTION CONTENT

CONTENT:

43 - FLOOR
PATTERN PLAN

SCALE: DRAWN BY:
3/16"=1'-0"

DESIGNED BY:
CHARLES ALLEM

SUPERVISING ID. MICHAEL W. HANLON
FL REGISTERED ARCHITECT
REGISTRATION NO. AR047270
FIRM ARCHITECTURE, LLC
AA20000726

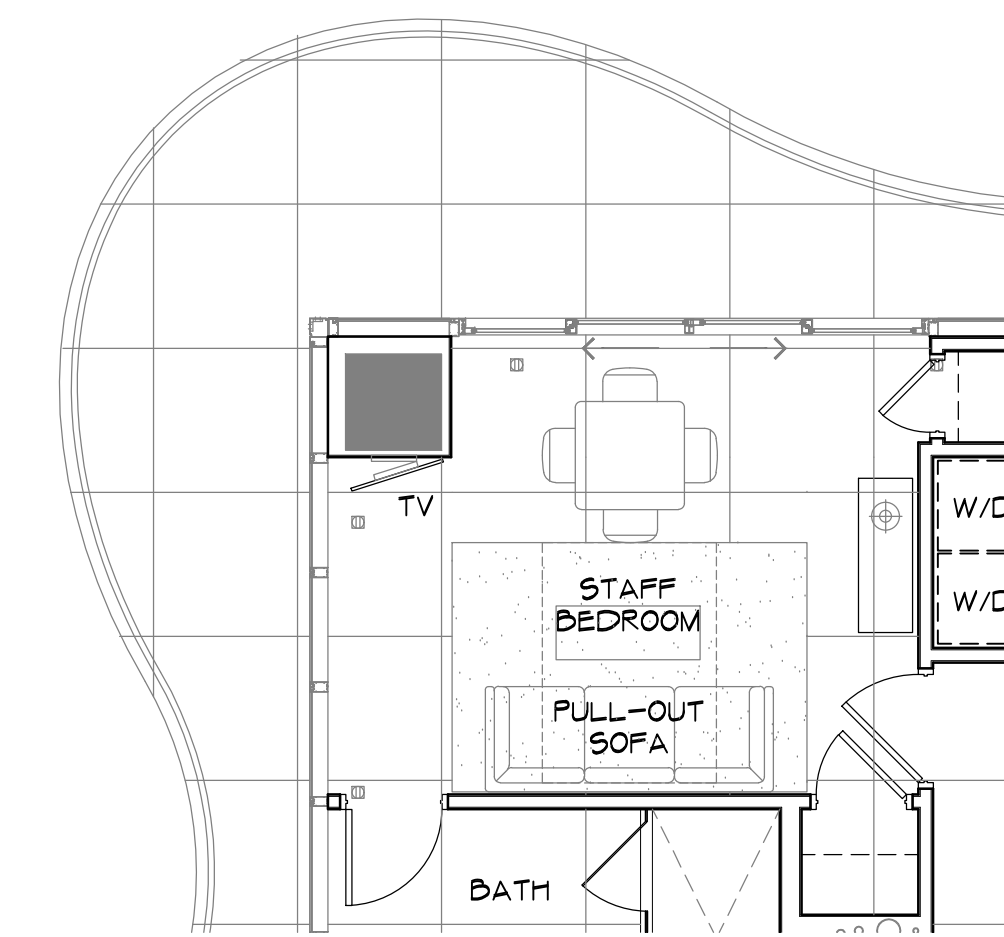
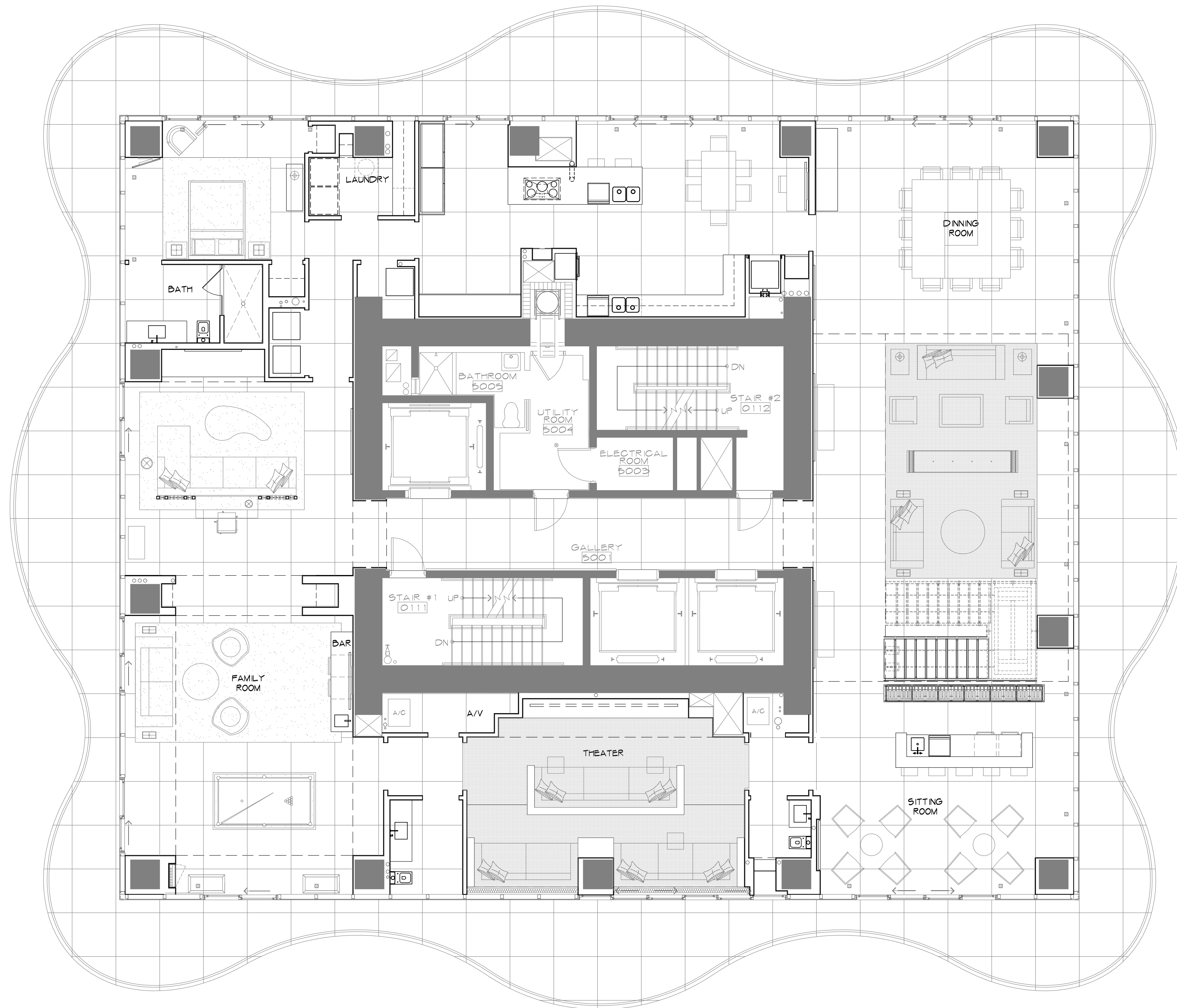
ISSUED FOR:

PROJECT NO. DRAWING NO.

14-015

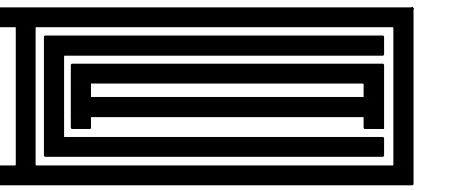
A-1.1

DATE PRINTED:
2014-05-22



2
3/16"=1'-0" 43 - STAFF BDRM OPTION

1
3/16"=1'-0" 43 - FLOOR PATTERN PLAN



CAD INTERNATIONAL

TEN MUSEUM PARK
1040 BISCAYNE BLVD, SUITE 200
MIAMI, FL 33132 USA
T 305.438.9757 - F 305.438.9758
E INFO@CADINTL.COM - WWW.CADINTL.COM

COPYRIGHT © 2013 CAD INTERNATIONAL

PROJECT:
INTERIOR RENOVATIONS FOR:

REGALIA
UPPER PENTHOUSE
19575 Collins Avenue
Sunny Isles Beach, FL 33160

CLIENT:

REV. NO. BRIEF DESCRIPTION CONTENT

CONTENT:
44 - FLOOR PLAN

SCALE:
3/16"=1'-0"

DESIGNED BY:
CHARLES ALLEM

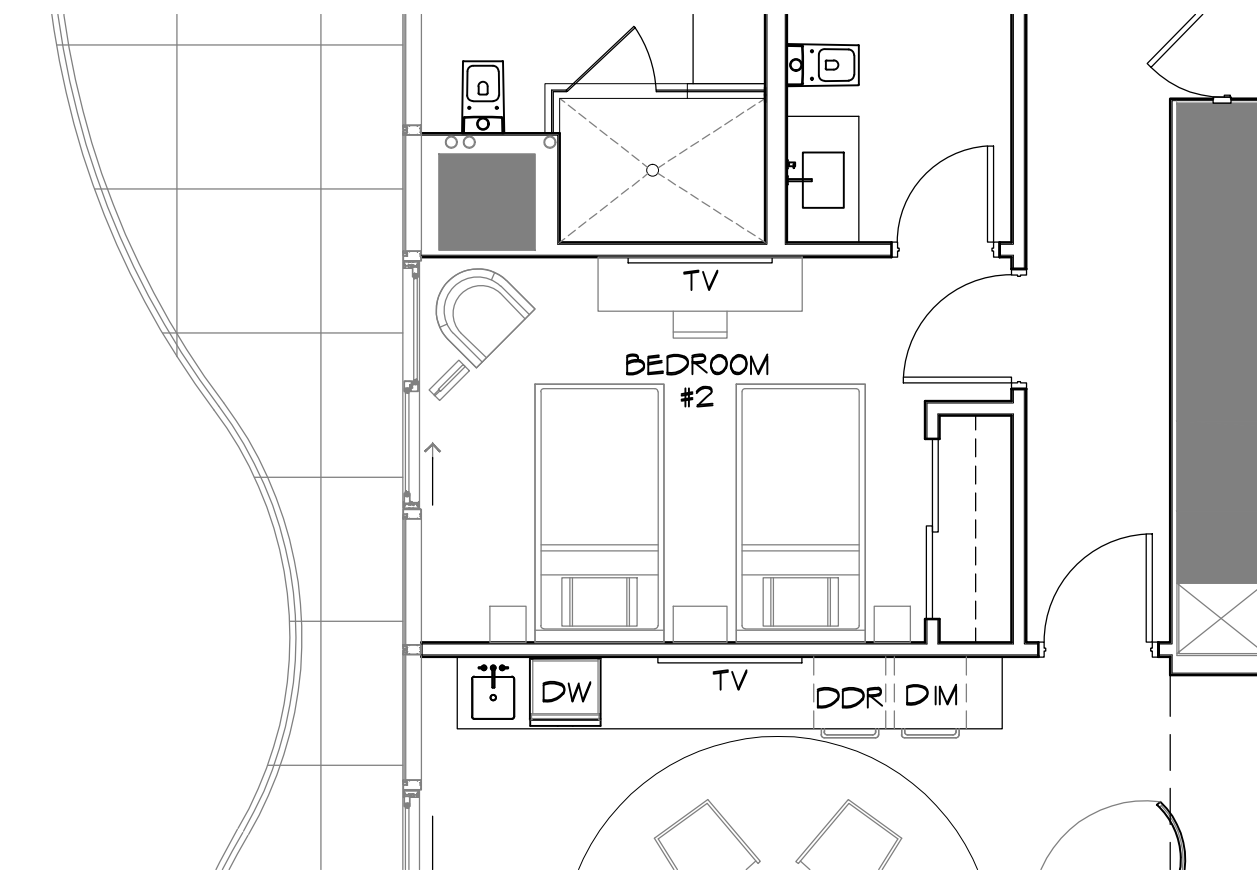
SUPERVISING ID:
MICHAEL W. HANLON
FL REGISTERED ARCHITECT
REGISTRATION NO. AR047270
HNSA ARCHITECTURE, LLC
AA20000726

ISSUED FOR:

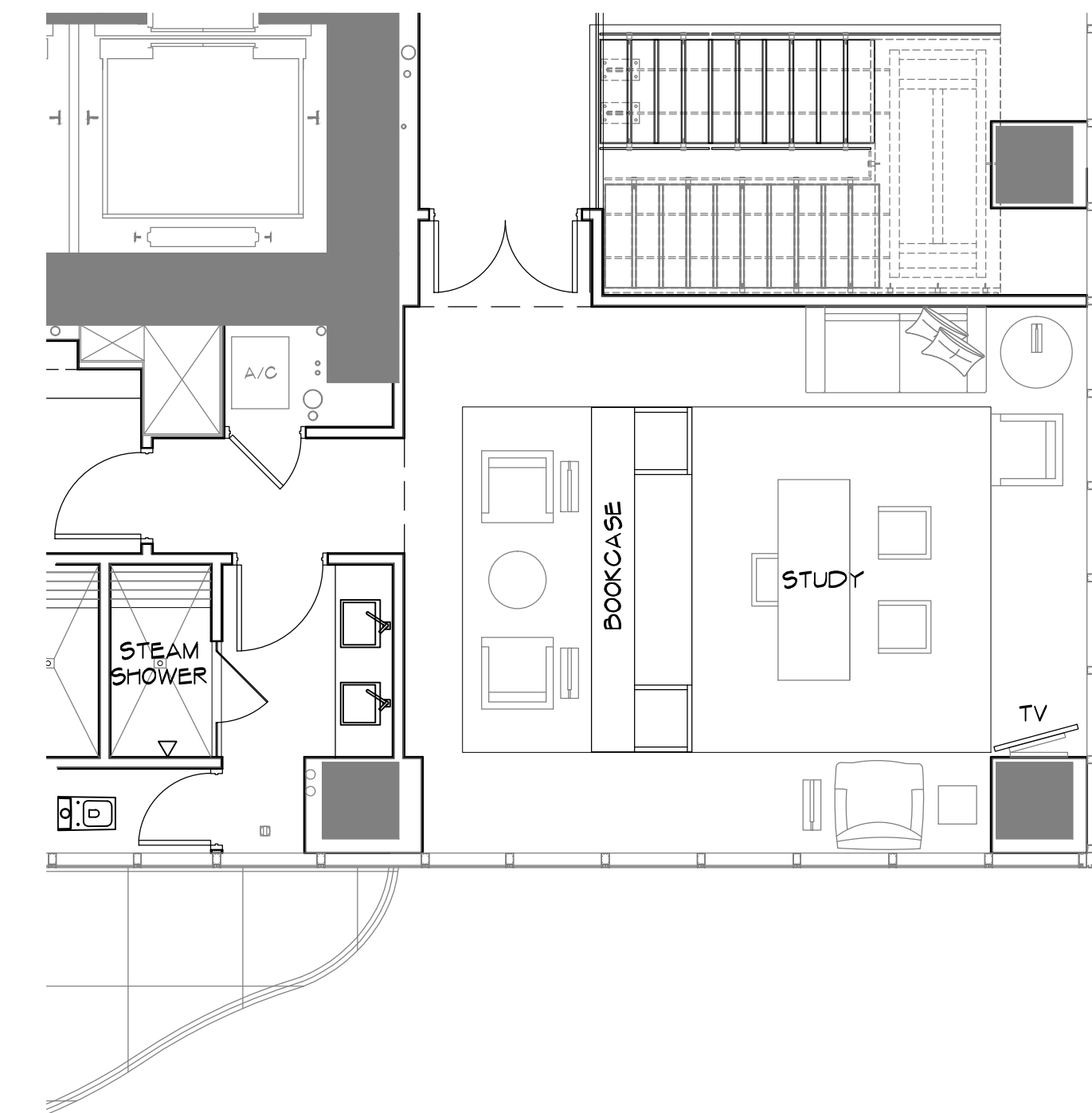
PROJECT NO. DRAWING NO.
14-015

A-1.2

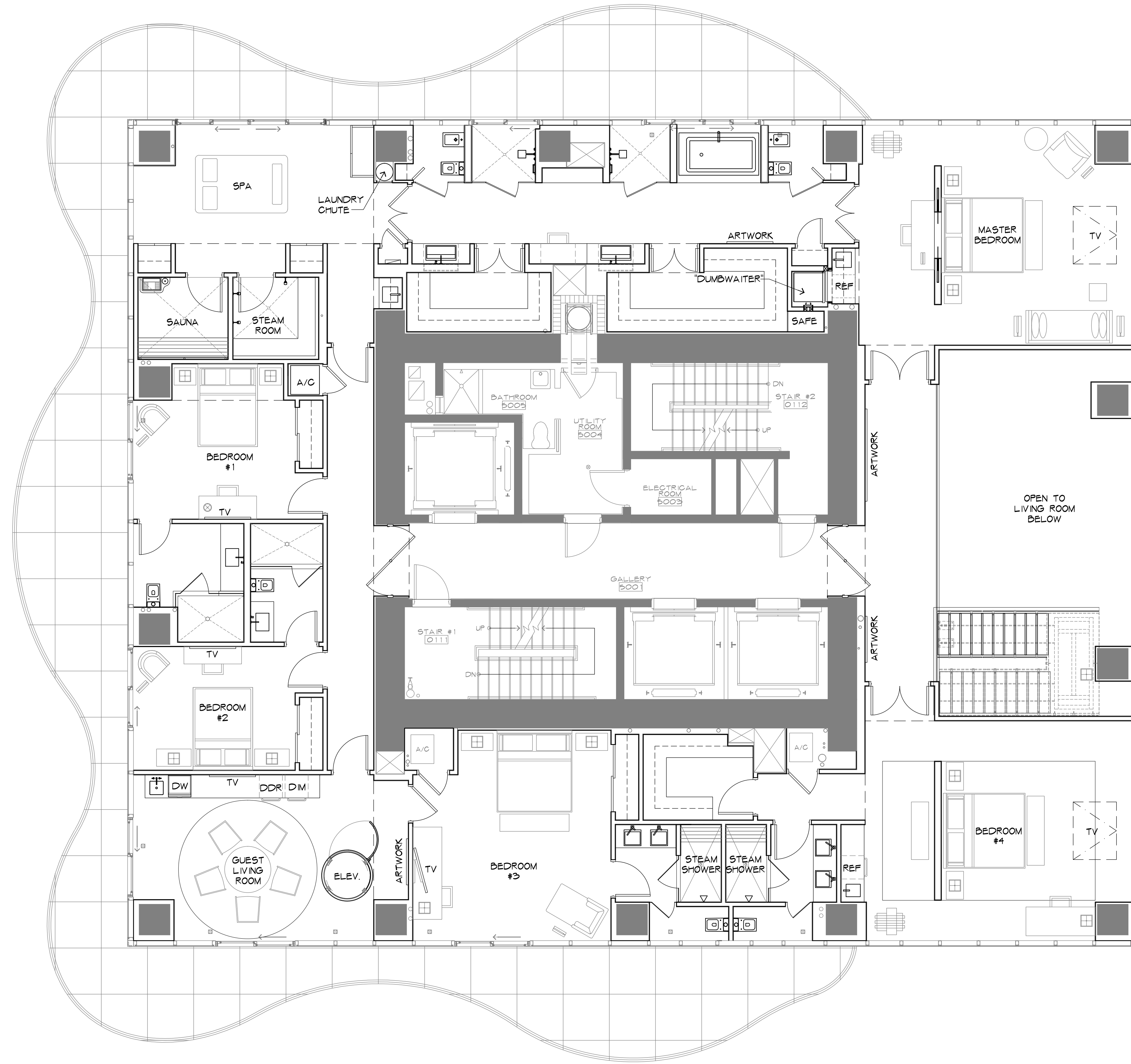
DATE PRINTED:
2014-05-22



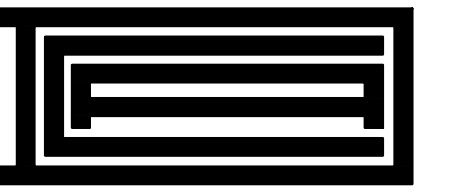
2
3/16"=1'-0" 44 - BEDROOM #2 OPTION



1
3/16"=1'-0" 44 - STUDY OPTION



1
3/16"=1'-0" 44 - FLOOR PLAN



CAD INTERNATIONAL

TEN MUSEUM PARK
1040 BISCAYNE BLVD, SUITE 200
MIAMI, FL 33132 USA
T 305.438.9757 - F 305.438.9758
E INFO@CADINTL.COM - WWW.CADINTL.COM

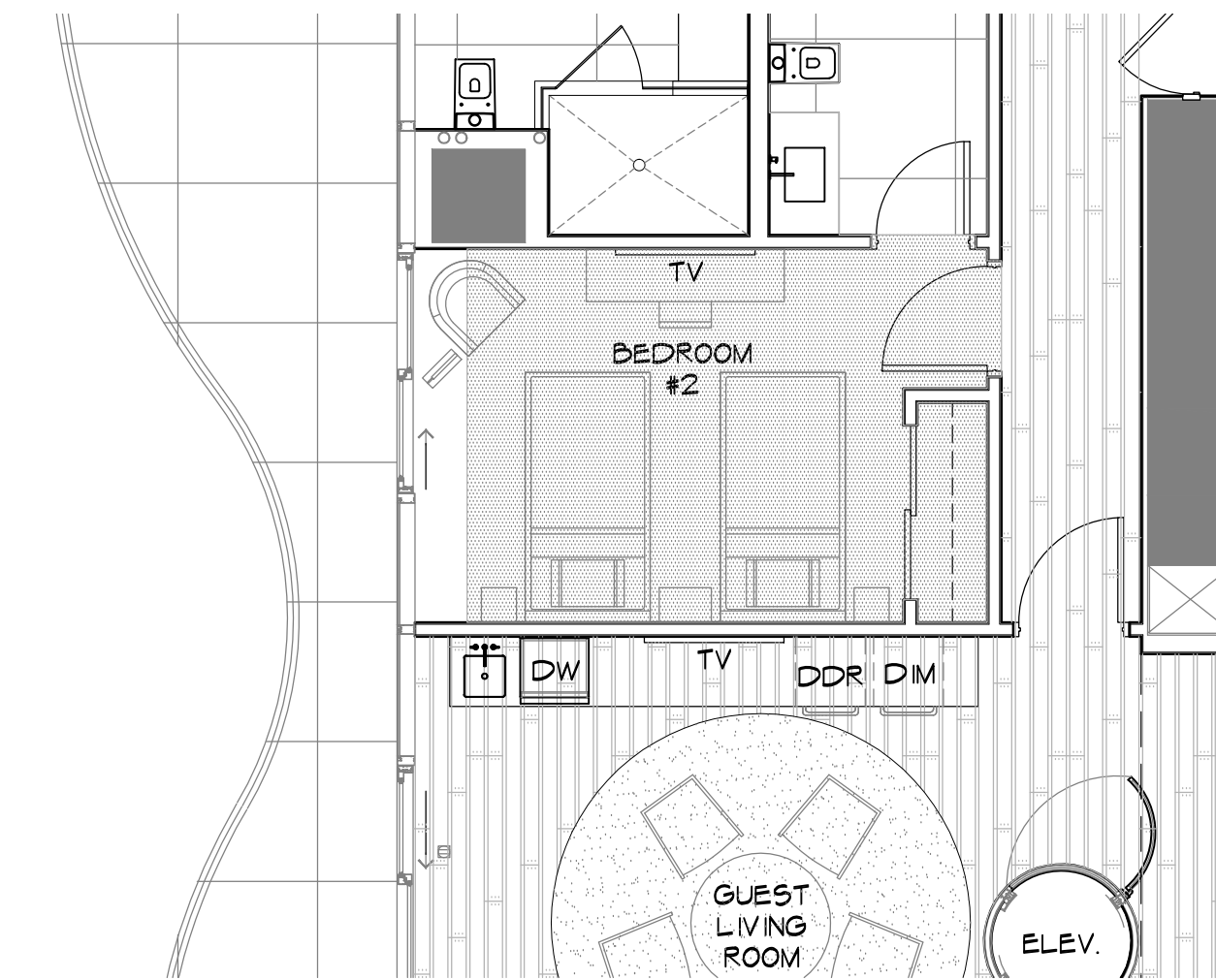
COPYRIGHT © 2013 CAD INTERNATIONAL

PROJECT:
INTERIOR RENOVATIONS FOR:

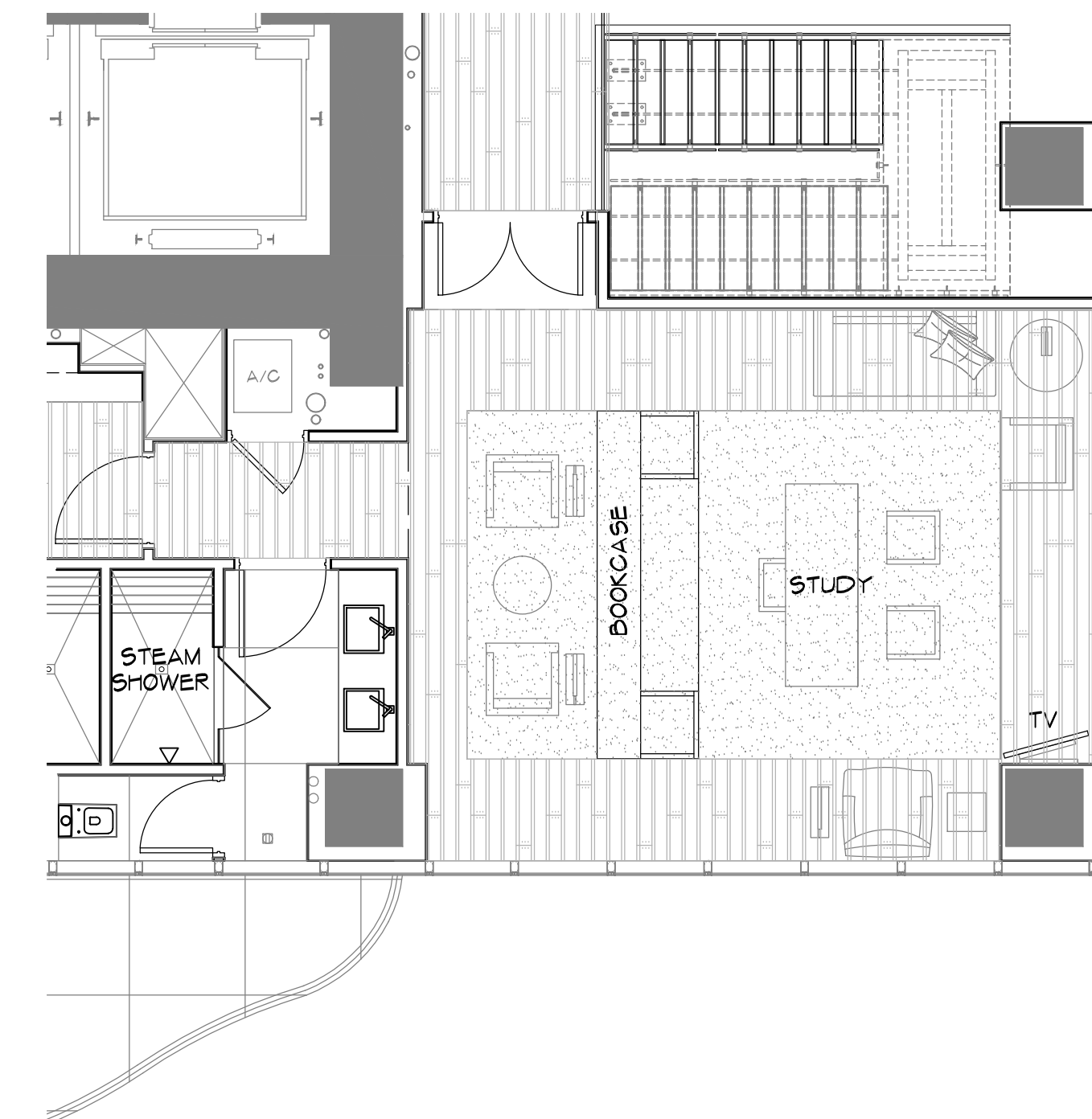
REGALIA
UPPER PENTHOUSE
19575 Collins Avenue
Sunny Isles Beach, FL 33160

CLIENT:

REV. NO. BRIEF DESCRIPTION CONTENT



2
3/16"=1'-0" 44 - F.P.P. BEDROOM #2 OPTION



1
3/16"=1'-0" 44 - F.P.P. STUDY OPTION

CONTENT:
44 - FLOOR
PATTERN PLAN

SCALE:
3/16"=1'-0"

DESIGNED BY:
CHARLES ALLEM

SUPERVISING ID:
MICHAEL W. HANLON
FL REGISTERED ARCHITECT
REGISTRATION NO. AR047270
FIRM ARCHITECTURE, LLC
AA2000726

ISSUED FOR:

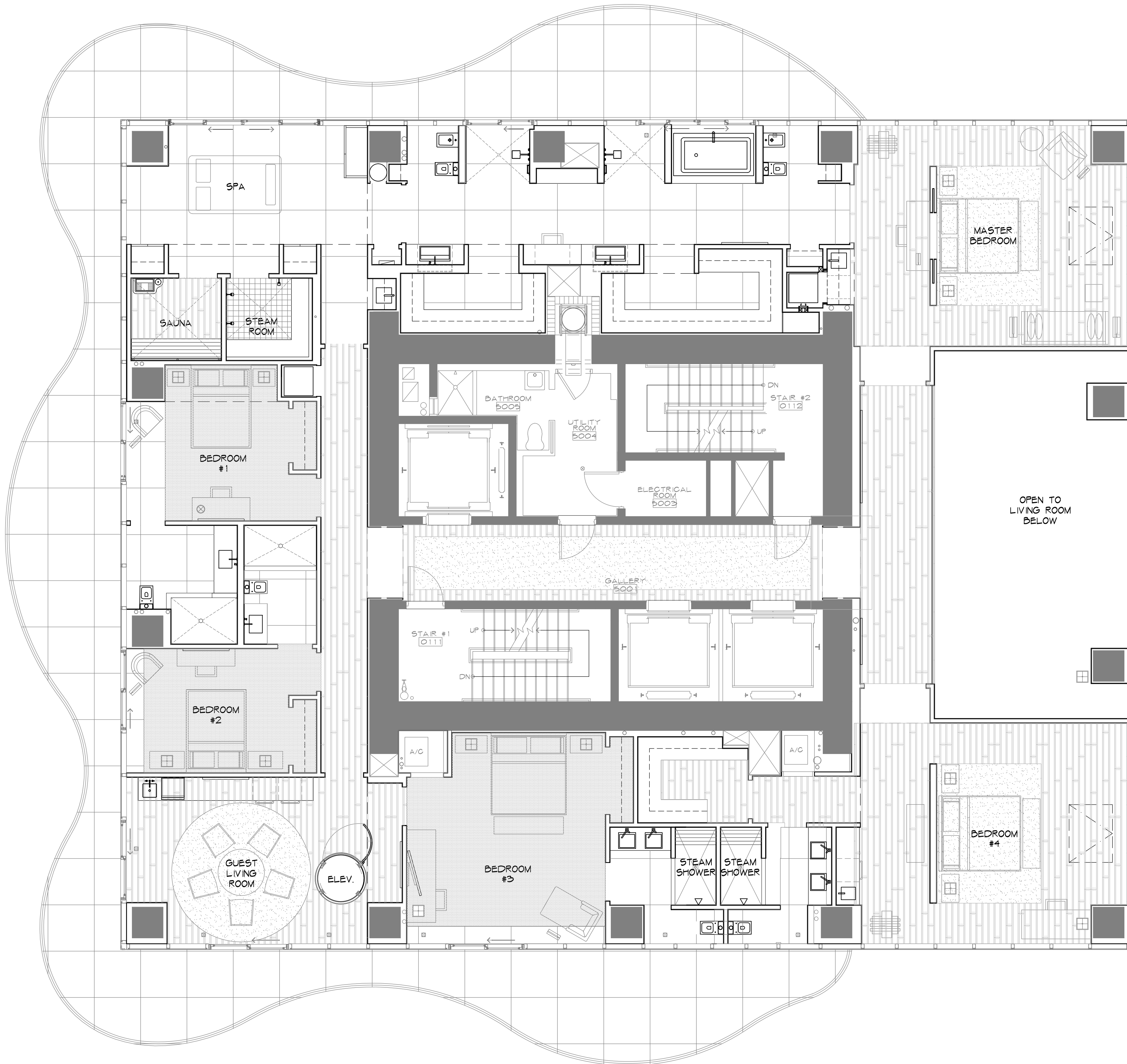
PROJECT NO. DRAWING NO.

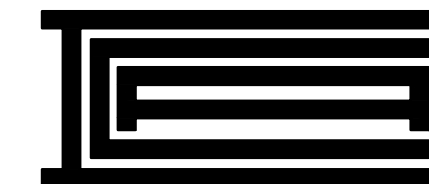
14-015

A-1.3

DATE PRINTED:
2014-05-22

1
3/16"=1'-0" 44 - FLOOR PATTERN PLAN





CAD INTERNATIONAL

TEN MUSEUM PARK
1040 BISCAYNE BLVD, SUITE 200
MIAMI, FL 33132 USA
T 305.438.9757 - F 305.438.9758
E INFO@CADINTL.COM - WWW.CADINTL.COM

COPYRIGHT © 2013 CAD INTERNATIONAL

PROJECT:
INTERIOR RENOVATIONS FOR:

REGALIA

UPPER PENTHOUSE

19575 Collins Avenue
Sunny Isles Beach, FL 33160

CLIENT:

REV. NO. BRIEF DESCRIPTION CONTENT

CONTENTS:

45 - FLOOR PLAN /
GYM

SCALE: DRAWN BY:
3/16"=1'-0"

DESIGNED BY:
CHARLES ALLEM

SUPERVISING ID. MICHAEL W. HANLON
FL REGISTERED ARCHITECT
REGISTRATION NO. AB001270
JHM ARCHITECTURE, LLC
A32000736

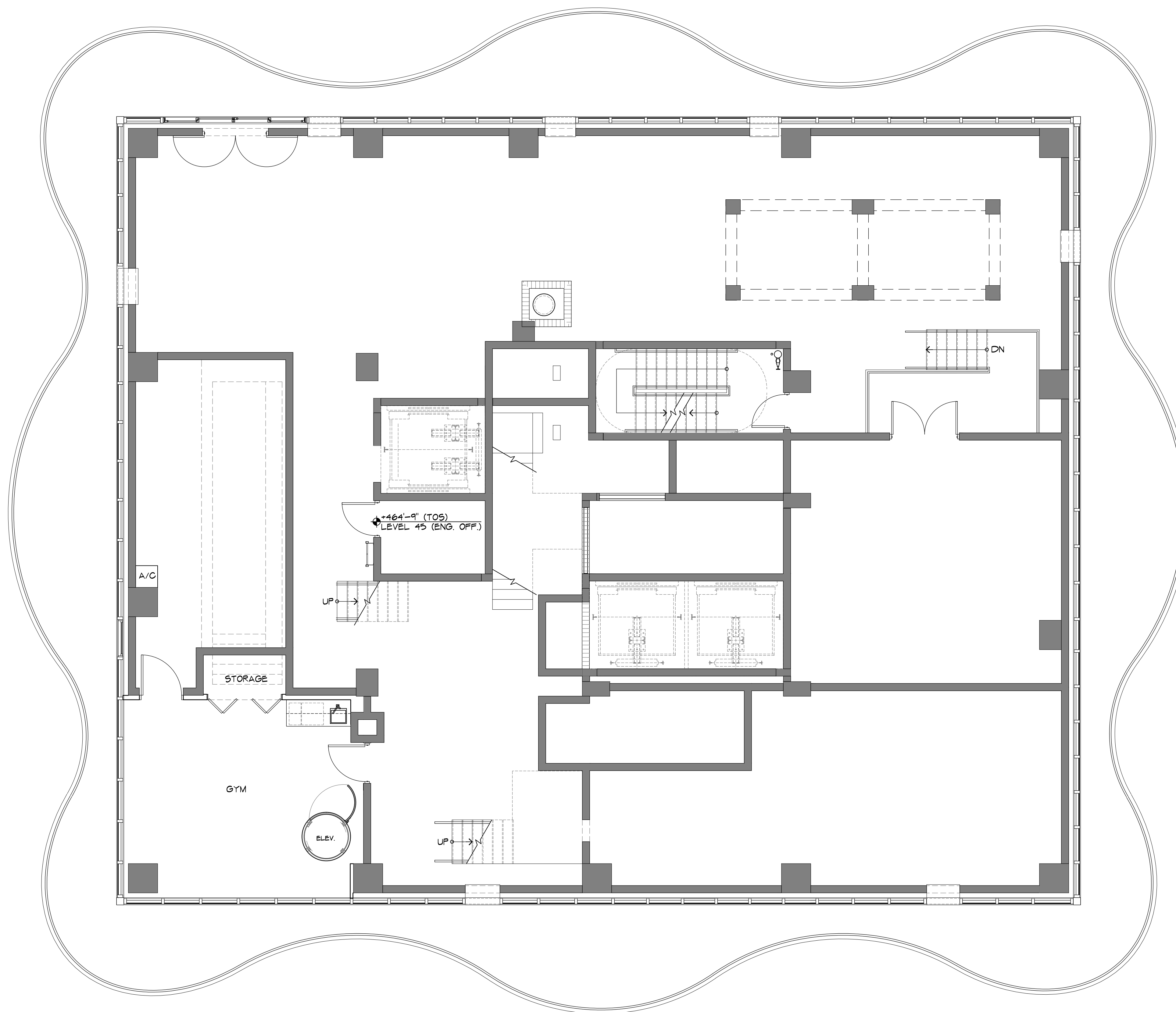
ISSUED FOR:

PROJECT NO.
14-015

DRAWING NO.

A-1.4

DATE PRINTED:
2014-05-06





CAD INTERNATIONAL

TEN MUSEUM PARK
1040 BISCAYNE BLVD, SUITE 200
MIAMI, FL 33132 USA
T 305.438.9757 - F 305.438.9758
E INFO@CADINTL.COM - WWW.CADINTL.COM

COPYRIGHT © 2013 CAD INTERNATIONAL

PROJECT:
INTERIOR RENOVATIONS FOR:

REGALIA

UPPER PENTHOUSE
19575 Collins Avenue
Sunny Isles Beach, FL 33160

CLIENT:

REV. NO. BRIEF DESCRIPTION CONTENT

CONTENT:

46 - FLOOR PLAN /
POOL DECK

SCALE: DRAWN BY:
3/16"=1'-0"

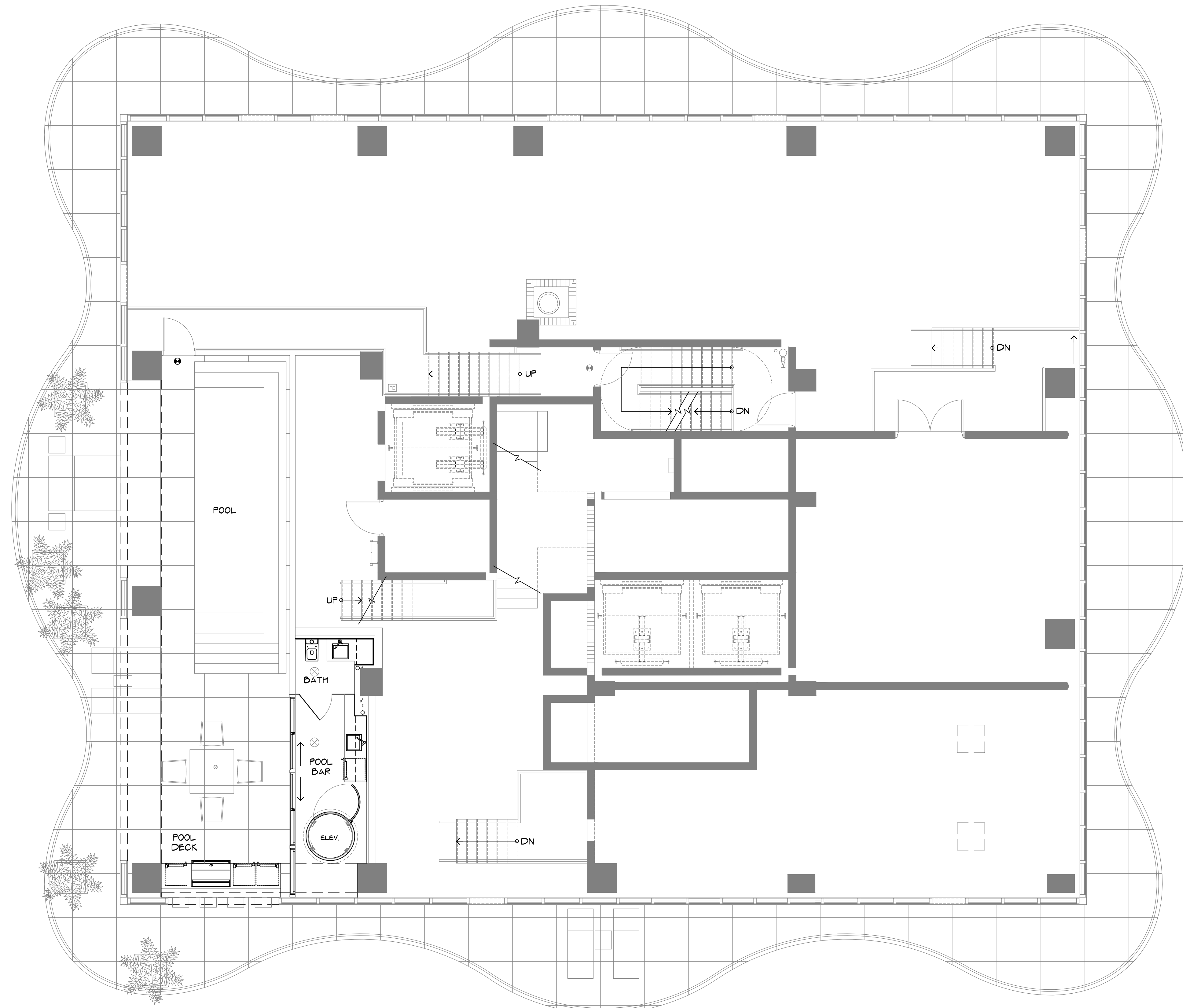
DESIGNED BY:
CHARLES ALLEM

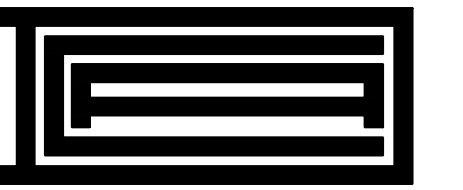
SUPERVISING ID: MICHAEL W. HANLON
FL REGISTERED ARCHITECT
REGISTRATION NO. AR017270
HSM ARCHITECTURE, LLC
A5290072

ISSUED FOR:

PROJECT NO. DRAWING NO.
14-015 A-1.5

DATE PRINTED:
2014-05-06





CAD INTERNATIONAL

TEN MUSEUM PARK
1040 BISCAYNE BLVD, SUITE 200
MIAMI, FL 33132 USA
T 305.438.9757 - F 305.438.9758
E INFO@CADINTL.COM - WWW.CADINTL.COM

COPYRIGHT © 2013 CAD INTERNATIONAL

PROJECT:
INTERIOR RENOVATIONS FOR:

REGALIA
UPPER PENTHOUSE
19575 Collins Avenue
Sunny Isles Beach, FL 33160

CLIENT:

REV. NO. BRIEF DESCRIPTION CONTENT

CONTENT:

43 - REFLECTED
CEILING PLAN

SCALE: DRAWN BY:
3/16"=1'-0"

DESIGNED BY:
CHARLES ALLEM

SUPERVISING ID. MICHAEL W. HANLON
FL REGISTERED ARCHITECT
REGISTRATION NO. AR047270
FIRM ARCHITECTURE, LLC
AA20000726

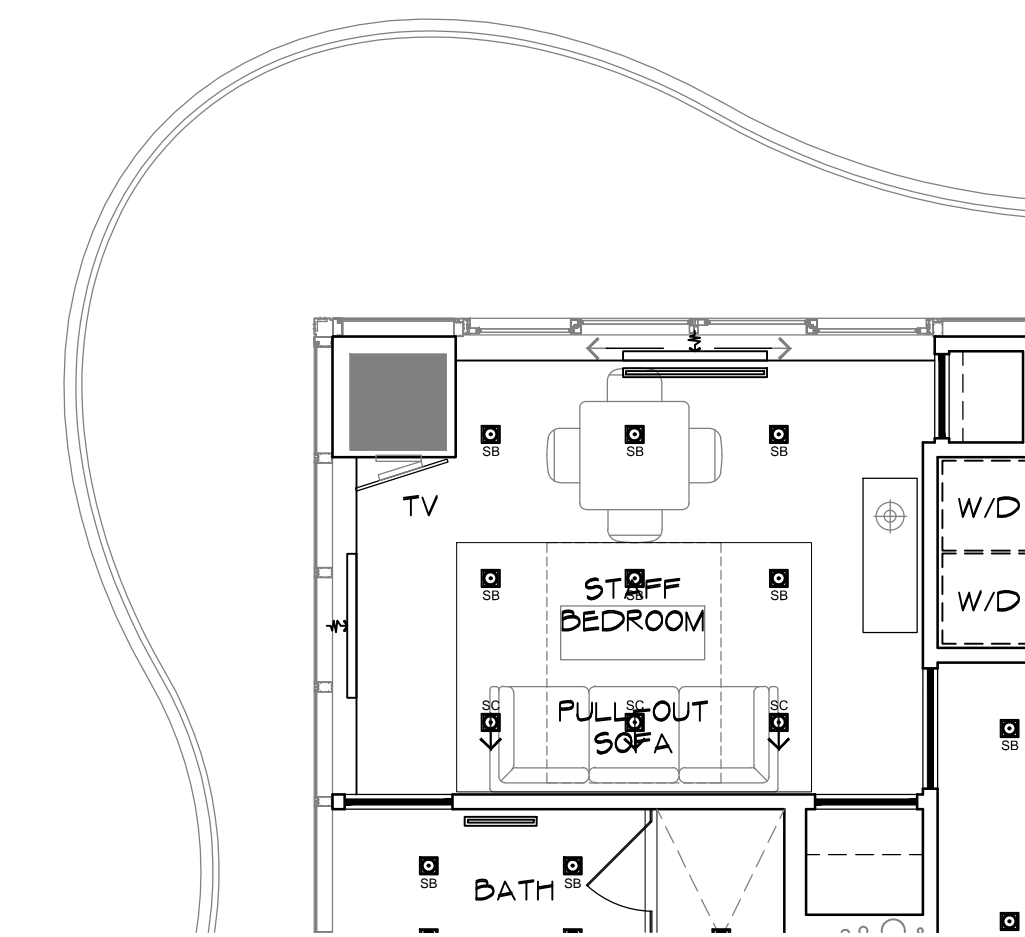
ISSUED FOR:

PROJECT NO. DRAWING NO.

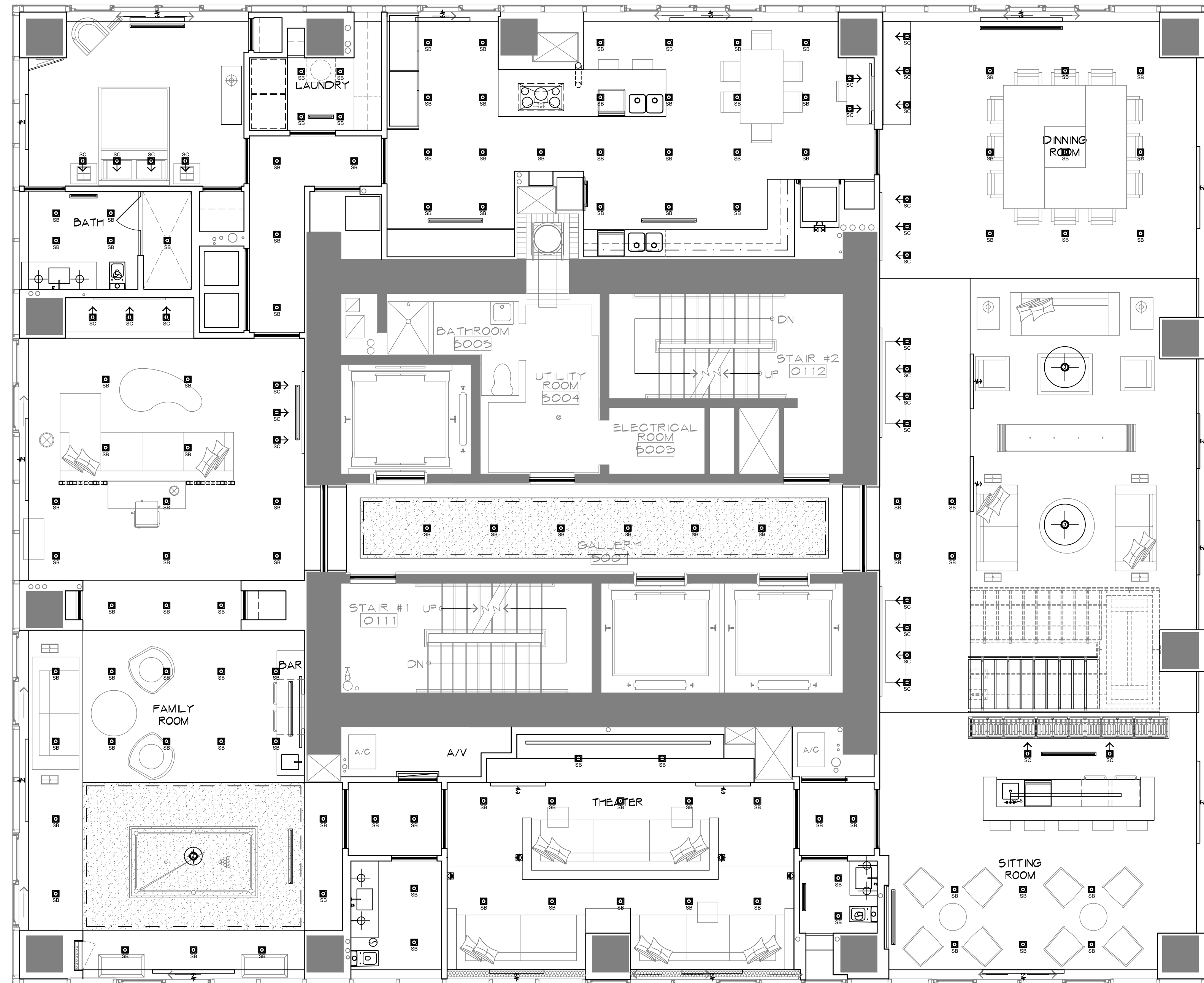
14-015

A-2.0

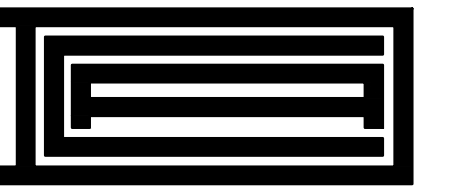
DATE PRINTED:
2014-05-22



2
3/16"=1'-0" 43 - R.C.P. STAFF BDRM OPT.



1
3/16"=1'-0" 43 - REFLECTED CEILING PLAN



CAD INTERNATIONAL

TEN MUSEUM PARK
1040 BISCAYNE BLVD, SUITE 200
MIAMI, FL 33132 USA
T 305.438.9757 - F 305.438.9758
E INFO@CADINTL.COM - WWW.CADINTL.COM

COPYRIGHT © 2013 CAD INTERNATIONAL

PROJECT:
INTERIOR RENOVATIONS FOR:

REGALIA
UPPER PENTHOUSE
19575 Collins Avenue
Sunny Isles Beach, FL 33160

CLIENT:

REV. NO. BRIEF DESCRIPTION CONTENT

CONTENT:
44 - REFLECTED
CEILING PLAN

SCALE:
3/16"=1'-0"

DESIGNED BY:
CHARLES ALLEM

SUPERVISING ID:
MICHAEL W. HANLON
FL REGISTERED ARCHITECT
REGISTRATION NO. AR047270
HNSK ARCHITECTURE, LLC
A20000726

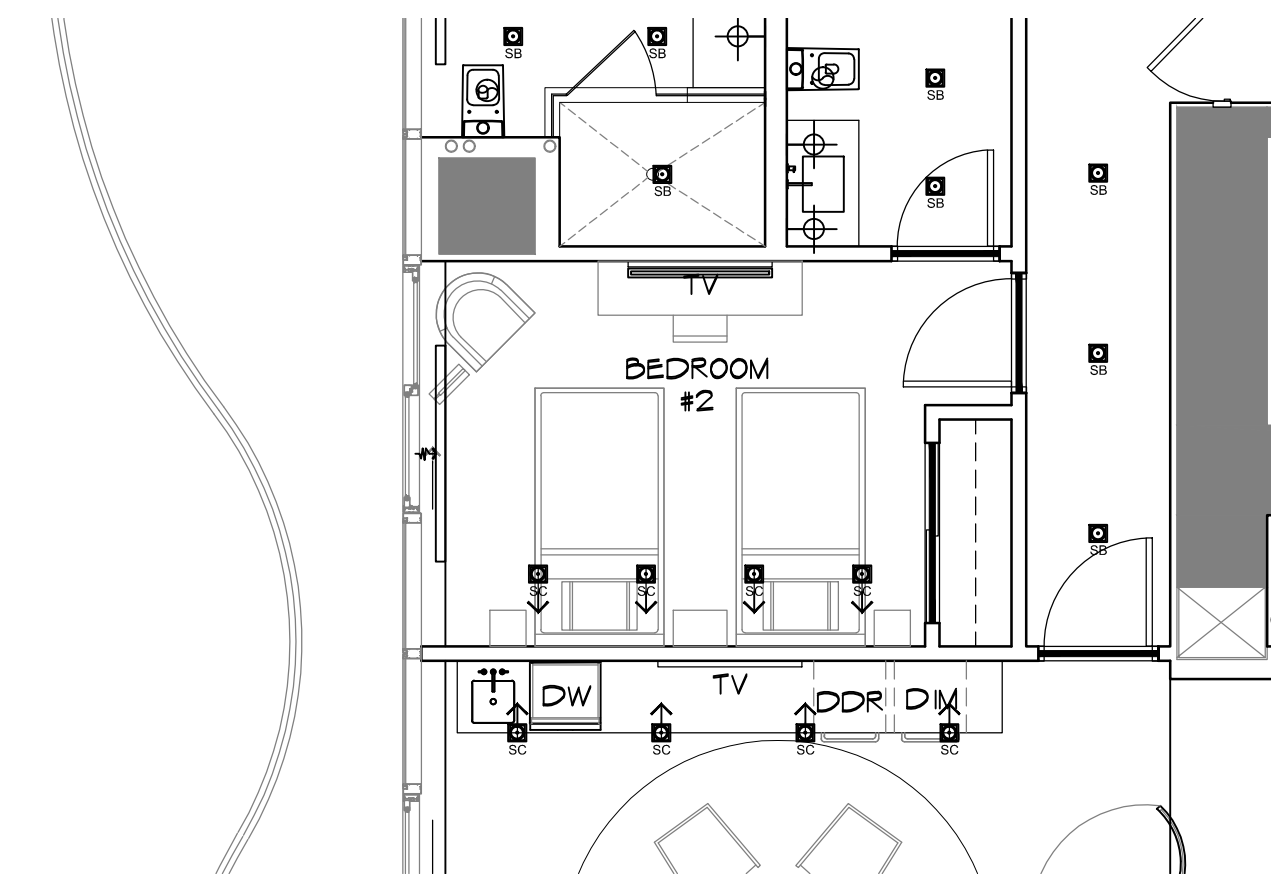
ISSUED FOR:

PROJECT NO. DRAWING NO.

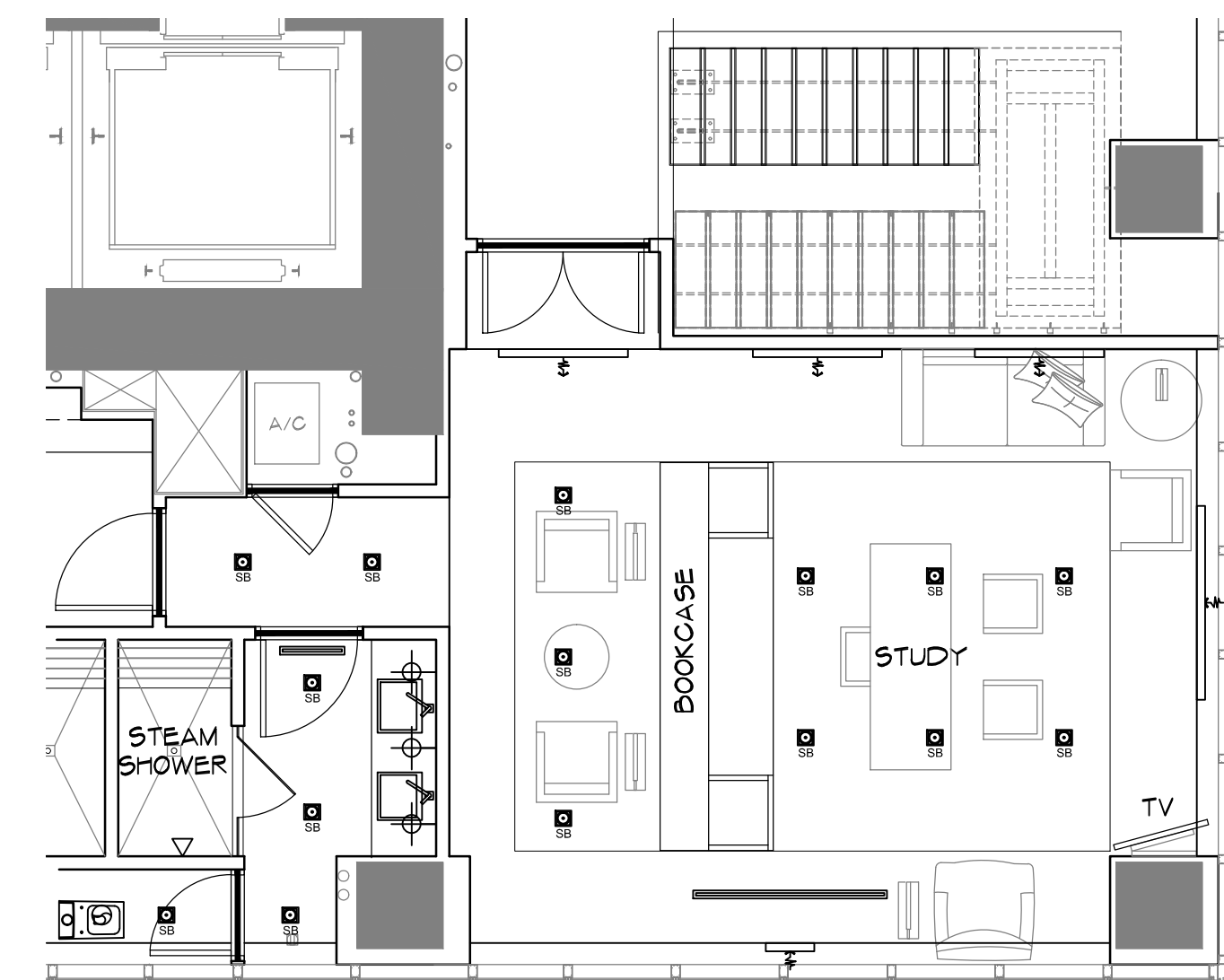
14-015

A-2.1

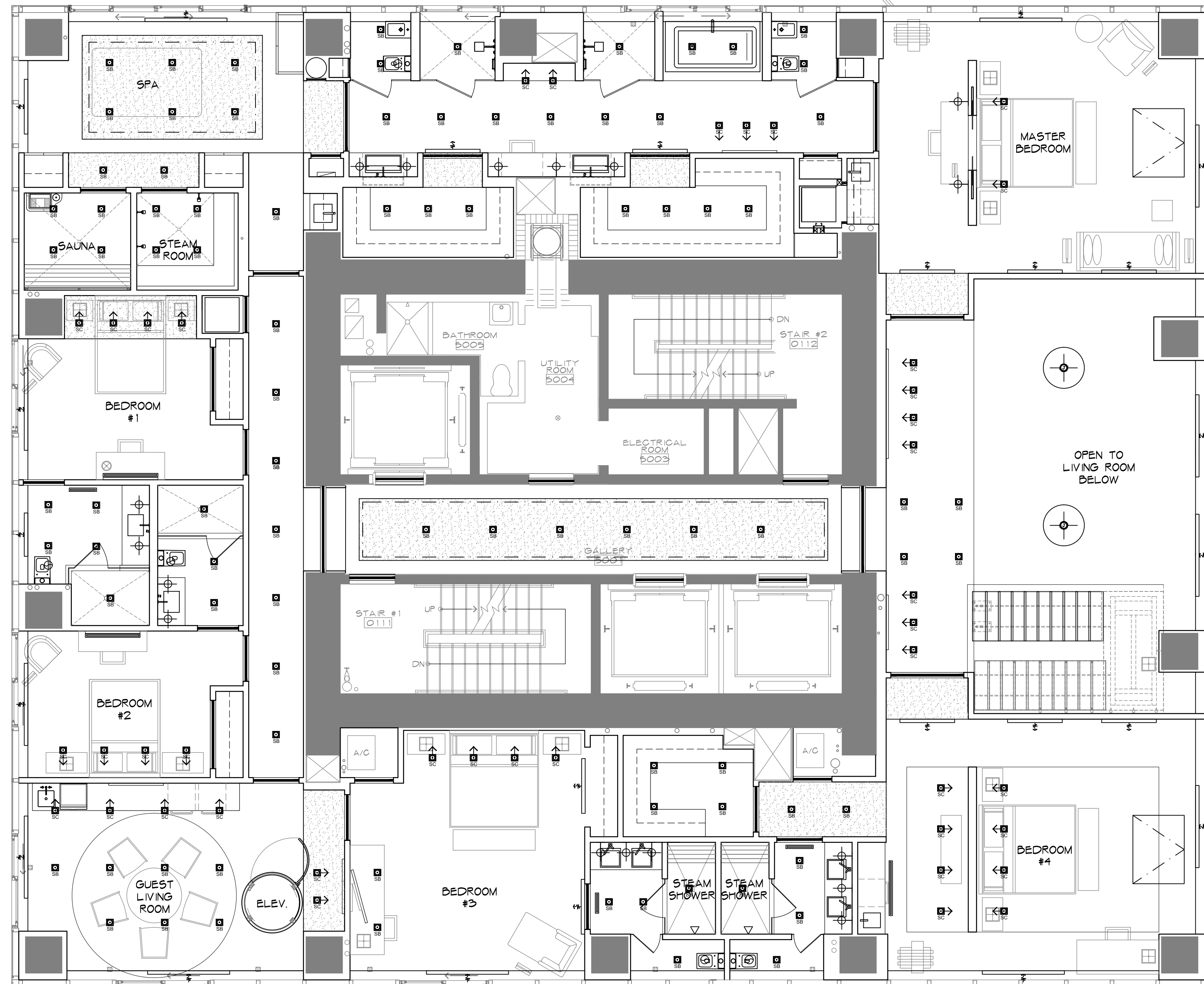
DATE PRINTED:
2014-05-22



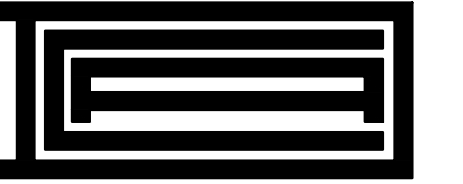
2
3/16"=1'-0" 44 - BEDROOM #2 OPTION



1
3/16"=1'-0" 44 - STUDY OPTION



1
3/16"=1'-0" 44 - REFLECTED CEILING PLAN



CAD INTERNATIONAL

TEN MUSEUM PARK
1040 BISCAYNE BLVD, SUITE 200
MIAMI, FL 33132 USA
T 305.438.9757 - F 305.438.9758
E INFO@CADINTL.COM - WWW.CADINTL.COM

COPYRIGHT © 2013 CAD INTERNATIONAL

PROJECT:
INTERIOR RENOVATIONS FOR:

REGALIA

UPPER PENTHOUSE
19575 Collins Avenue
Sunny Isles Beach, FL 33160

CLIENT:

REV. NO. BRIEF DESCRIPTION CONTENT

CONTENT:

46 - REFLECTED
CEILING PLAN

SCALE: DRAWN BY:
3/16"=1'-0"

DESIGNED BY:
CHARLES ALLEM

SUPERVISING ID:

MICHAEL W. HANLON
FL REGISTERED ARCHITECT
REGISTRATION NO. AR047270
FIRM ARCHITECTURE, LLC
AA20000726

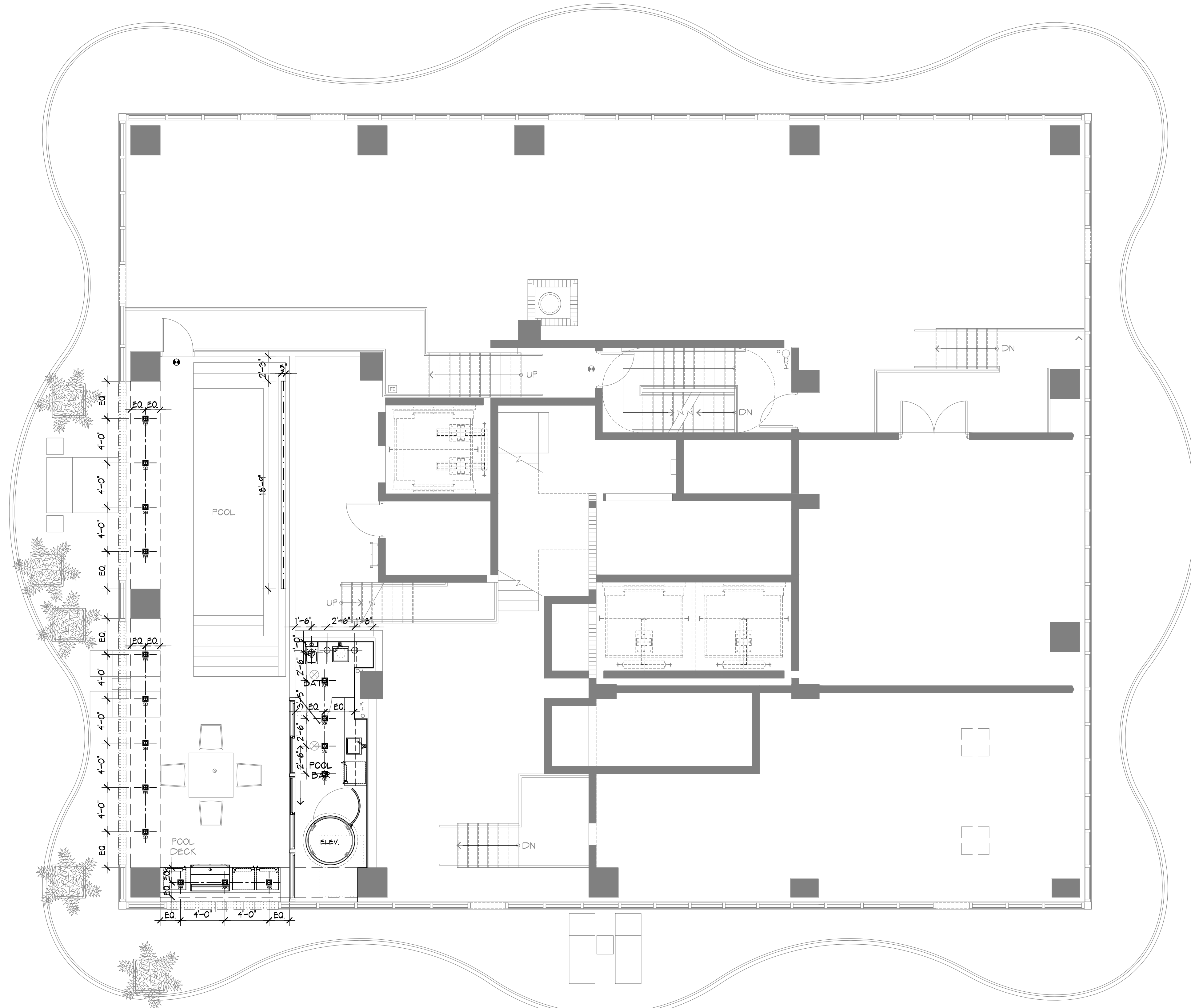
ISSUED FOR:

PROJECT NO. DRAWING NO.

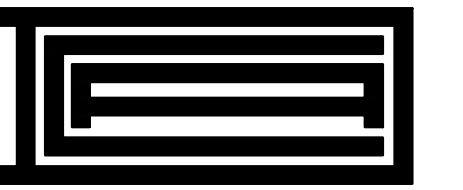
14-015

A-2.3

DATE PRINTED:
2014-05-22



1
3/16"=1'-0" 46 - REFLECTED CEILING PLAN



CAD INTERNATIONAL

TEN MUSEUM PARK
1040 BISCAYNE BLVD. SUITE 200
MIAMI, FL 33132 USA
T 305.438.9757 - F 305.438.9758
E INFO@CADINTL.COM - WWW.CADINTL.COM

COPYRIGHT © 2013 CAD INTERNATIONAL

PROJECT:
INTERIOR RENOVATIONS FOR:

REGALIA

UPPER PENTHOUSE
19575 Collins Avenue
Sunny Isles Beach, FL 33160

CLIENT:

REV. NO. BRIEF DESCRIPTION CONTENT

CONTENT:

INTERIOR ELEVATIONS

SCALE: DRAWN BY:

3/8"=1'-0"

DESIGNED BY:
CHARLES ALLEM

SUPERVISING ID:

MICHAEL W. HANLON
FL REGISTERED ARCHITECT
REGISTRATION NO. AR047270
FIRM ARCHITECTURE, LLC
AA20000726

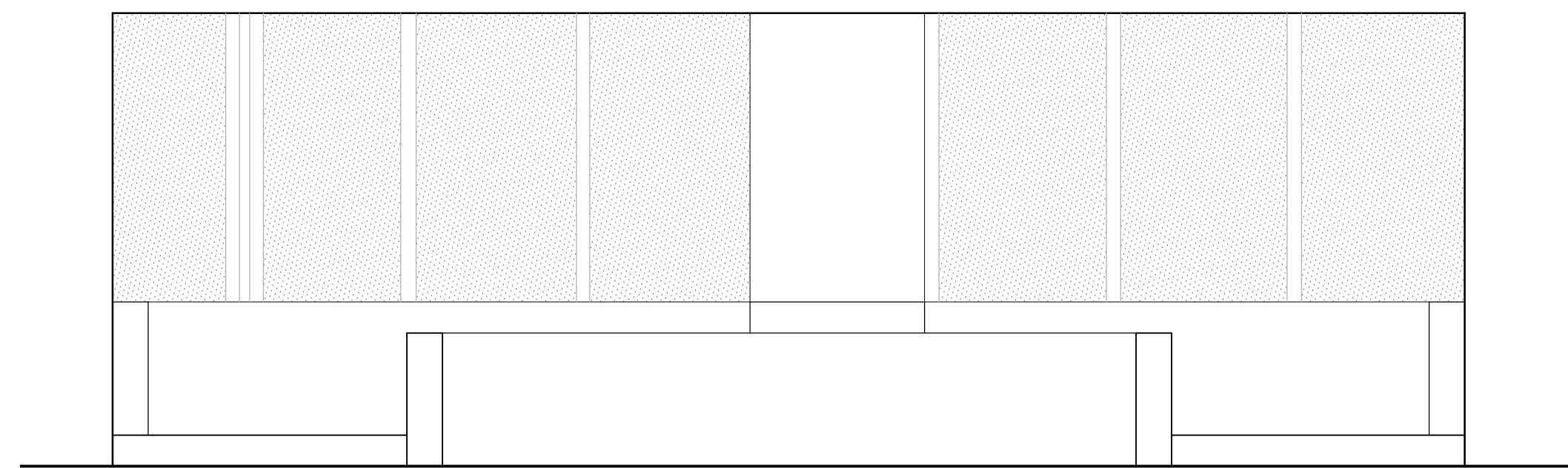
ISSUED FOR:

PROJECT NO. DRAWING NO.

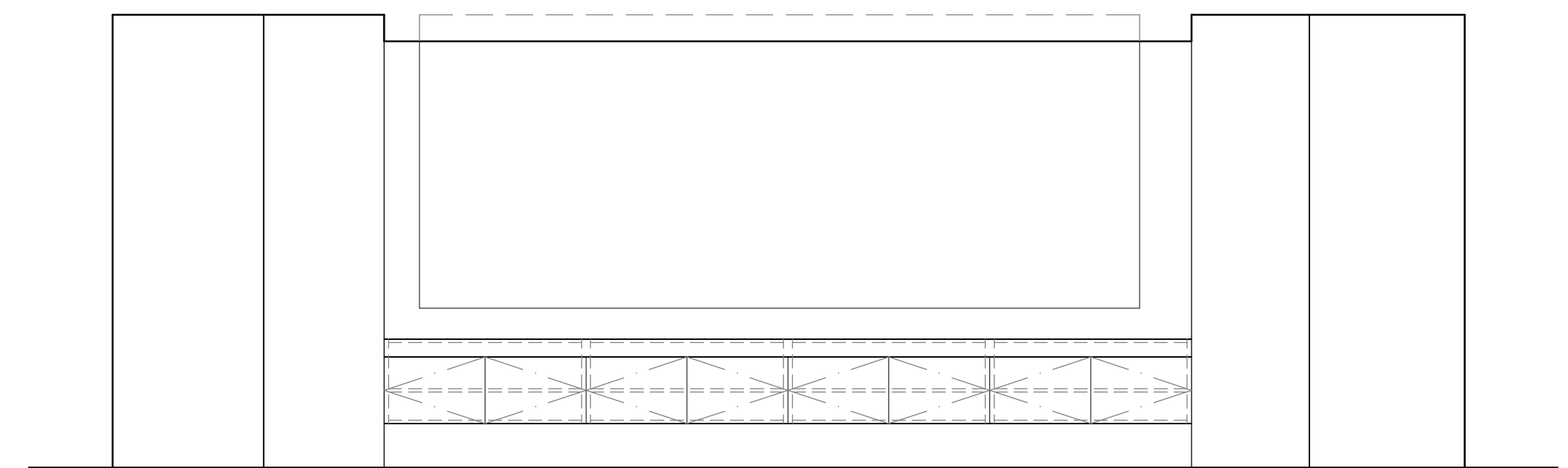
14-015

A-4.1

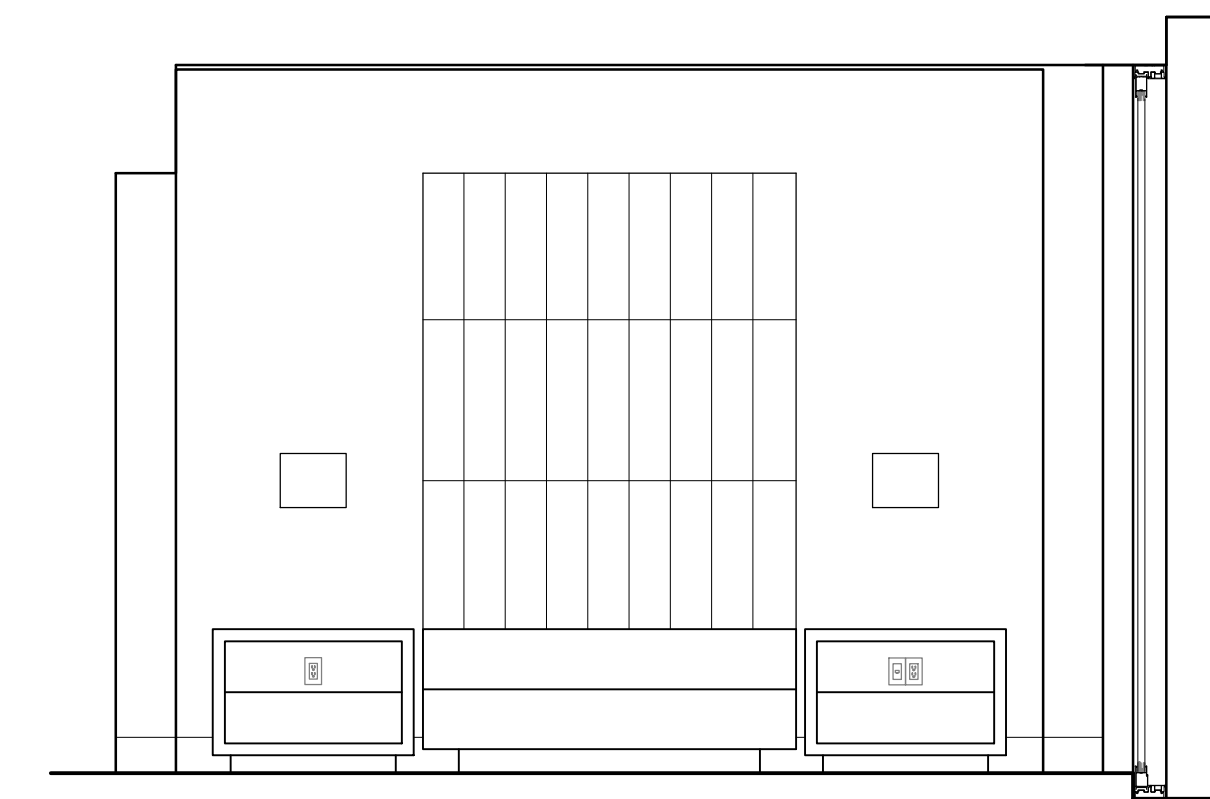
DATE PRINTED:
2014-06-10



ELEVATION 'A'



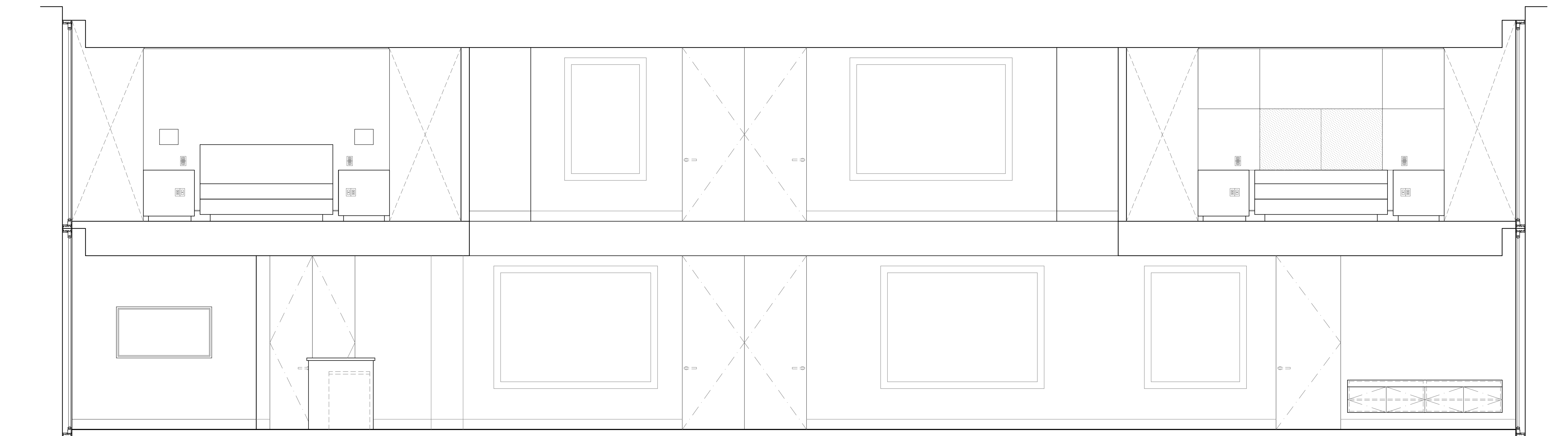
ELEVATION 'B'



ELEVATION 'A'

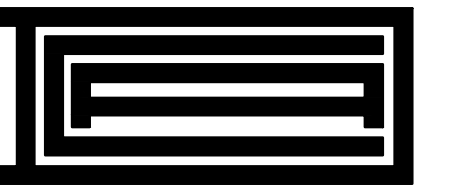
1
3/16"=1'-0" 44 - THEATER ELEVATIONS

2
3/16"=1'-0" 44 - BEDROOM #4 ELEVATION



ELEVATION 'A'

3
3/8"=1'-0" 43/44 - OVERAL ELEVATION



CAD INTERNATIONAL

TEN MUSEUM PARK
1040 BISCAYNE BLVD, SUITE 200
MIAMI, FL 33132 USA
T 305.438.9757 - F 305.438.9758
E INFO@CADINTL.COM - WWW.CADINTL.COM

COPYRIGHT © 2013 CAD INTERNATIONAL

PROJECT:
INTERIOR RENOVATIONS FOR:

REGALIA
UPPER PENTHOUSE
19575 Collins Avenue
Sunny Isles Beach, FL 33160

CLIENT:

REV. NO. BRIEF DESCRIPTION CONTENT

CONTENT:

KITCHEN ELEVATIONS

SCALE: DRAWN BY:

3/8"=1'-0"

DESIGNED BY:
CHARLES ALLEM

SUPERVISING ID. MICHAEL W. HANLON
FL REGISTERED ARCHITECT
REGISTRATION NO. AR047270
FIRM ARCHITECTURE, LLC
AA20000726

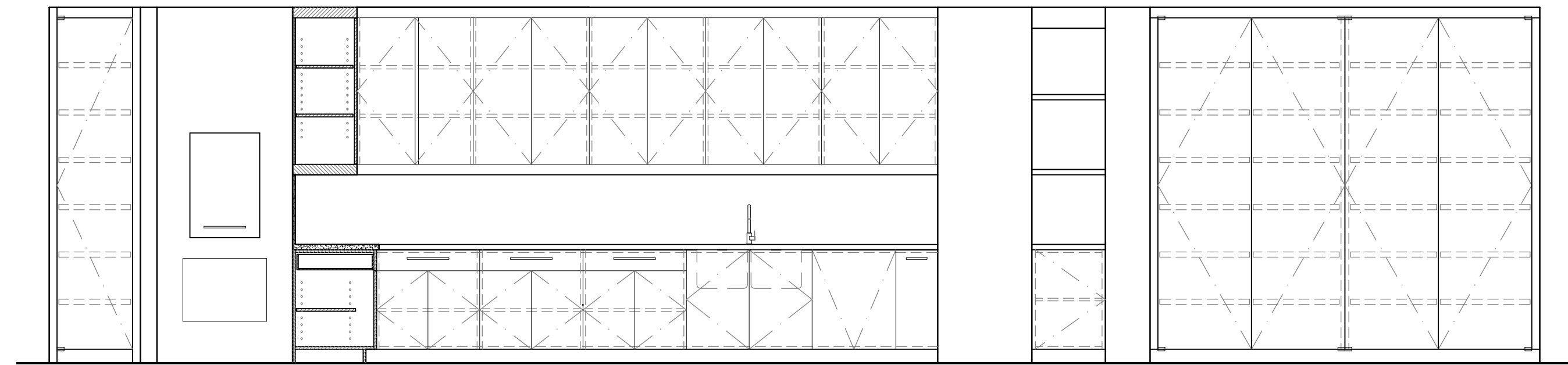
ISSUED FOR:

PROJECT NO. DRAWING NO.

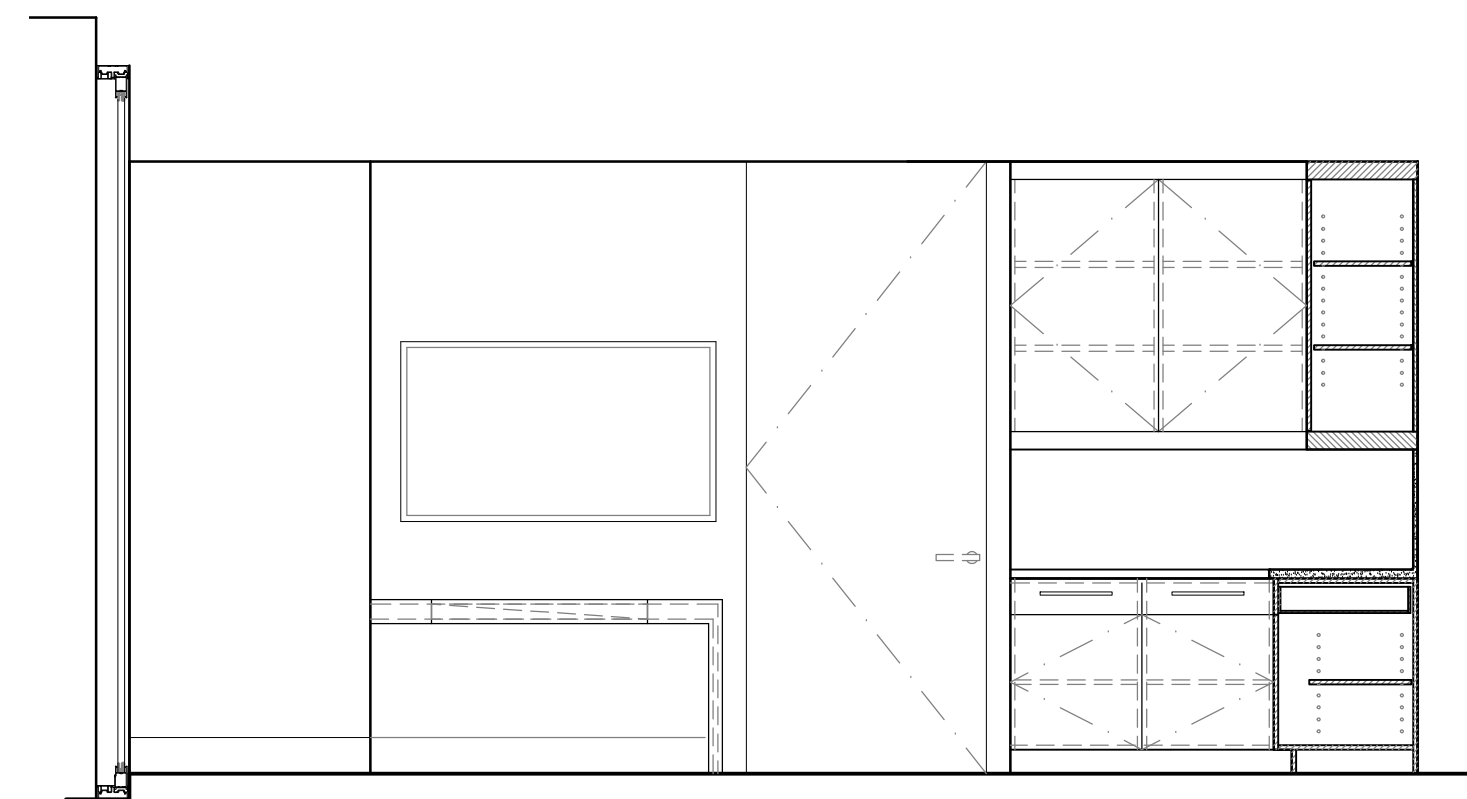
14-015

A-4.0

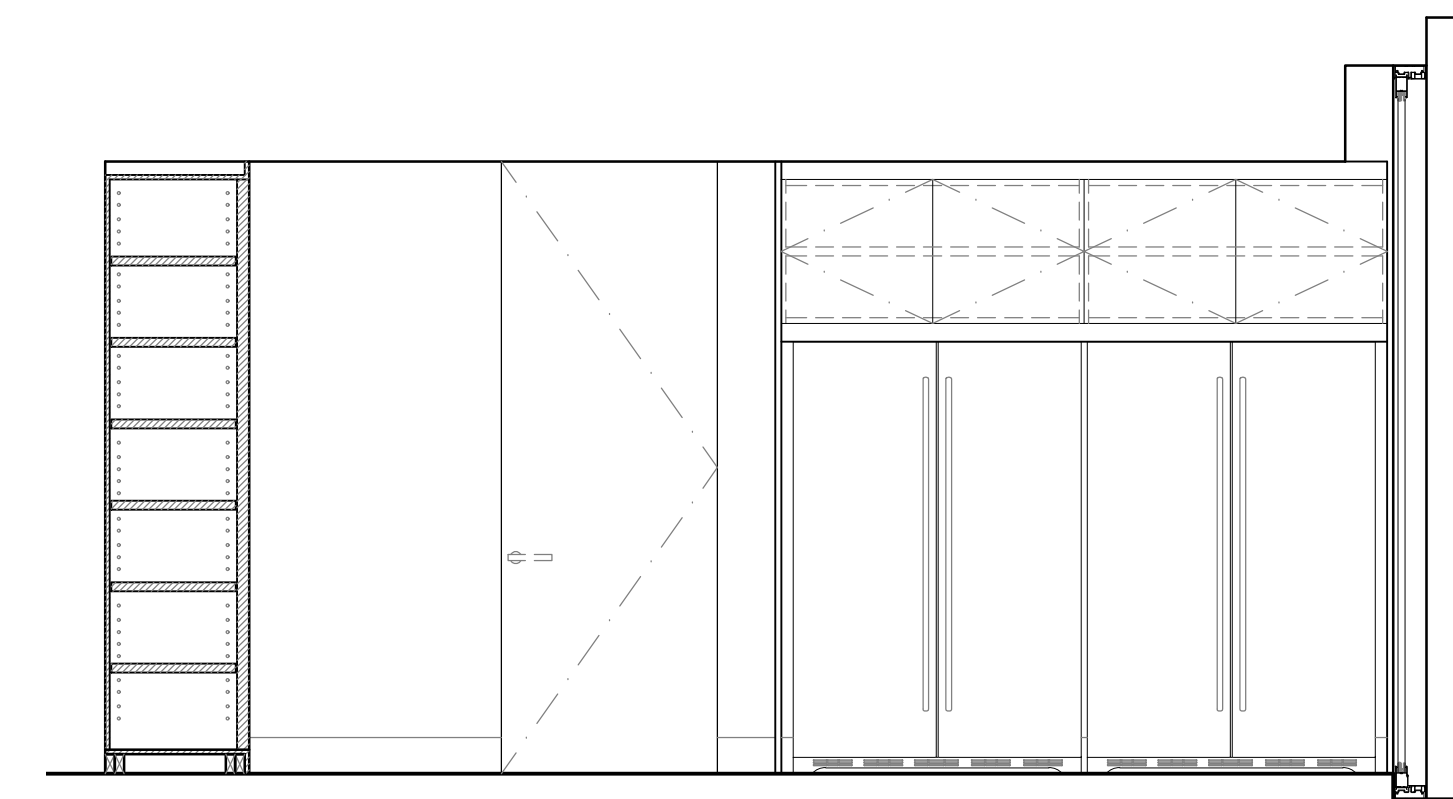
DATE PRINTED:
2014-06-10



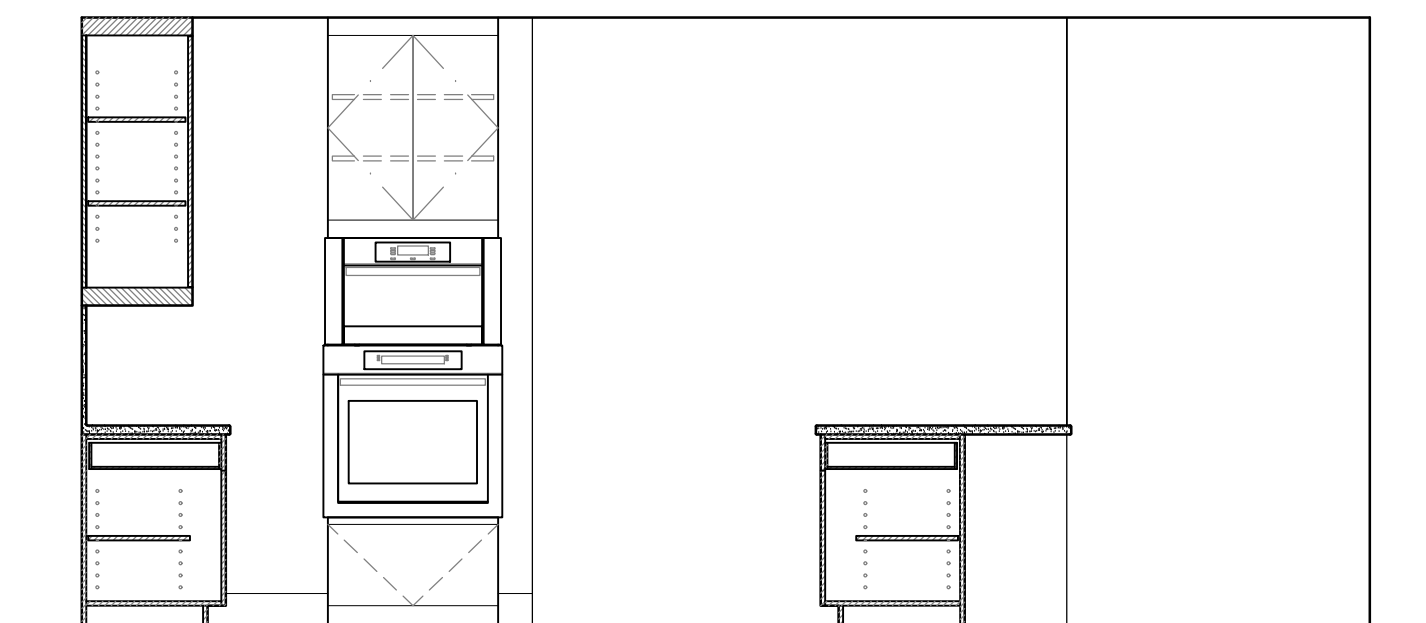
ELEVATION 'A'



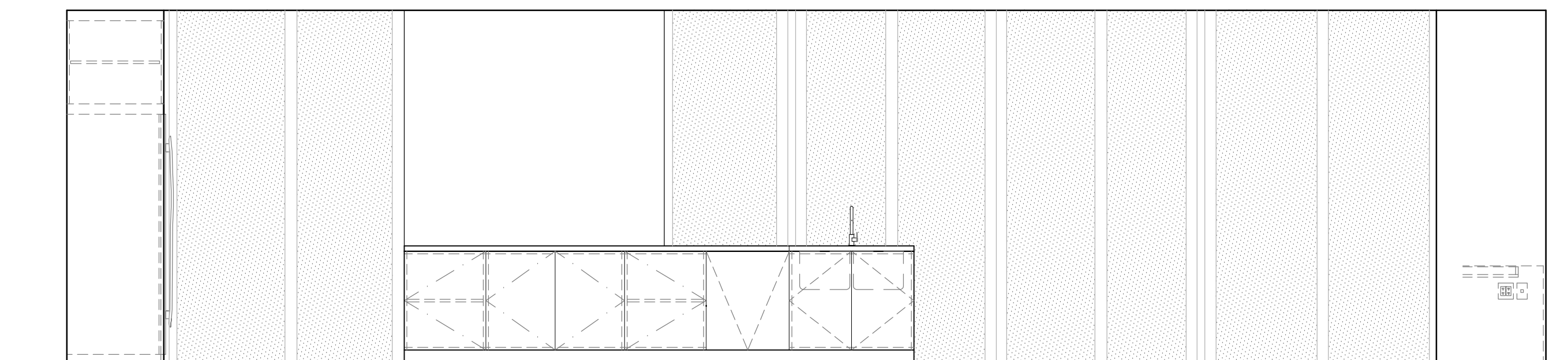
ELEVATION 'B'



ELEVATION 'C'



ELEVATION 'D'



ELEVATION 'E'